

PSAT/NMSQT Fall 2020, 11th grade - Scores & Benchmarks

School
Mean Score
906

District
Mean Score
906

State
Mean Score
985

Total Group
Mean Score
1041

Number of Participants	12	12	4,200	709,813
------------------------	----	----	-------	---------

Met Both Benchmarks	17%	17%	34%	49%
Met ERW	(460) 50%	(460) 50%	(460) 69%	(460) 76%
Met Math	(510) 17%	(510) 17%	(510) 36%	(510) 51%
Met None	50%	50%	29%	22%

Distribution of Scores

Mean Total Score (320-1520)

Total Score	906	906	985	1041
-------------	-----	-----	-----	------

Mean Section Scores (160-760)

Evidence-Based Reading and Writing	465	465	507	531
Math	441	441	478	510

PSAT/NMSSQT Fall 2020, 10th grade - Scores & Benchmarks

School
Mean Score
894

District
Mean Score
894

State
Mean Score
911

Total Group
Mean Score
956

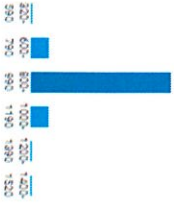
Number of Participants	10
Met Both Benchmarks	10%
Met ERW	(430) 60%
Met Math	(480) 30%
Met None	20%

Number of Participants	10
Met Both Benchmarks	10%
Met ERW	(430) 60%
Met Math	(480) 30%
Met None	20%

Number of Participants	1,956
Met Both Benchmarks	30%
Met ERW	(430) 65%
Met Math	(480) 31%
Met None	34%

Number of Participants	554,543
Met Both Benchmarks	43%
Met ERW	(430) 71%
Met Math	(480) 45%
Met None	26%

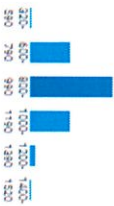
Distribution of Scores



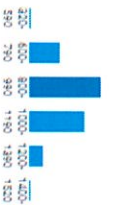
Distribution of Scores



Distribution of Scores



Distribution of Scores



Mean Total Score (320-1520)

Total Score 894

Mean Total Score (320-1520)

Total Score 894

Mean Total Score (320-1520)

Total Score 911

Mean Total Score (320-1520)

Total Score 956

Mean Section Scores (160-760)

Evidence-Based Reading and Writing	440
Math	454

Mean Section Scores (160-760)

Evidence-Based Reading and Writing	440
Math	454

Mean Section Scores (160-760)

Evidence-Based Reading and Writing	466
Math	444

Mean Section Scores (160-760)

Evidence-Based Reading and Writing	486
Math	470

PSAT 8/9 September 2020 - January 2021, 9th grade - Scores & Benchmarks

School
Mean Score
912

District
Mean Score
912

State
Mean Score
865

Total Group
Mean Score
882

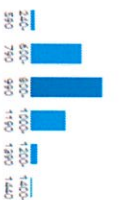
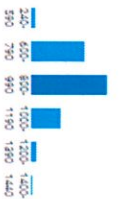
Number of Participants	12	Number of Participants	12	Number of Participants	591	Number of Participants	198,097
Met Both Benchmarks	50%	Met Both Benchmarks	50%	Met Both Benchmarks	32%	Met Both Benchmarks	38%
Met ERW	(410) 92%	Met ERW	(410) 92%	Met ERW	(410) 66%	Met ERW	(410) 64%
Met Math	(450) 50%	Met Math	(450) 50%	Met Math	(450) 34%	Met Math	(450) 41%
Met None	8%	Met None	8%	Met None	32%	Met None	33%

Distribution of Scores

Distribution of Scores

Distribution of Scores

Distribution of Scores



Mean Total Score (240-1440)

Mean Total Score (240-1440)

Mean Total Score (240-1440)

Mean Total Score (240-1440)

Total Score 912

Total Score 912

Total Score 865

Total Score 882

Mean Section Scores (120-720)

Mean Section Scores (120-720)

Mean Section Scores (120-720)

Mean Section Scores (120-720)

Evidence-Based Reading and Writing 470
Math 442

Evidence-Based Reading and Writing 470
Math 442

Evidence-Based Reading and Writing 445
Math 420

Evidence-Based Reading and Writing 447
Math 435